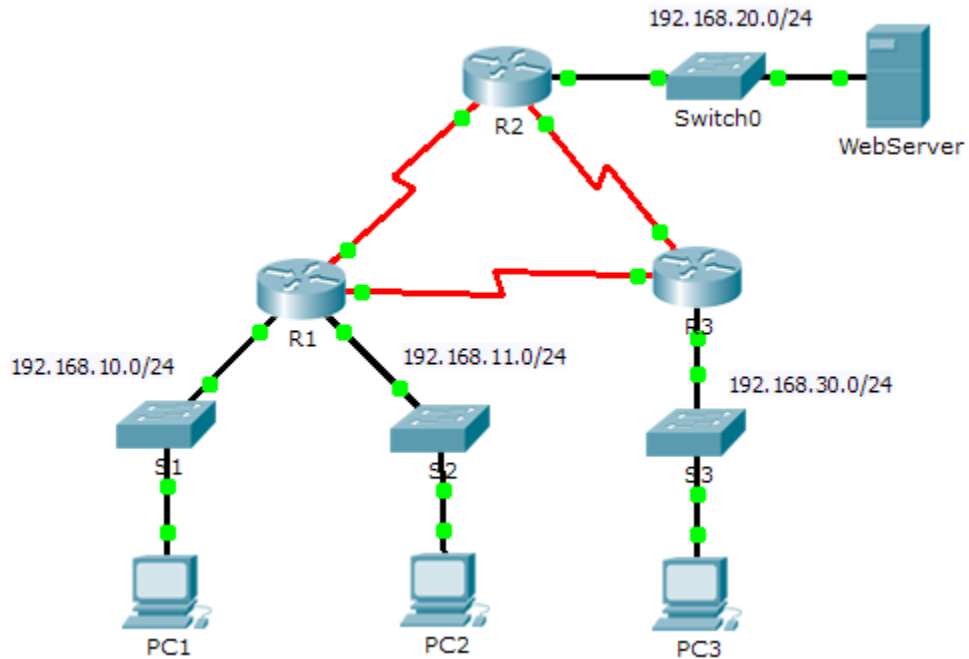


# Packet Tracer - Configuring Standard ACLs

## Topology



## Addressing Table

Device	Interface	IP Address	Subnet Mask	Default Gateway
R1	F0/0	192.168.10.1	255.255.255.0	N/A
	F0/1	192.168.11.1	255.255.255.0	N/A
	S0/0/0	10.1.1.1	255.255.255.252	N/A
	S0/0/1	10.3.3.1	255.255.255.252	N/A
R2	F0/0	192.168.20.1	255.255.255.0	N/A
	S0/0/0	10.1.1.2	255.255.255.252	N/A
	S0/0/1	10.2.2.1	255.255.255.252	N/A
R3	F0/0	192.168.30.1	255.255.255.0	N/A
	S0/0/0	10.3.3.2	255.255.255.252	N/A
	S0/0/1	10.2.2.2	255.255.255.252	N/A
PC1	NIC	192.168.10.10	255.255.255.0	192.168.10.1
PC2	NIC	192.168.11.10	255.255.255.0	192.168.11.1
PC3	NIC	192.168.30.10	255.255.255.0	192.168.30.1
WebServer	NIC	192.168.20.254	255.255.255.0	192.168.20.1

## Objectives

**Part 1: Plan an ACL Implementation**

**Part 2: Configure, Apply, and Verify a Standard ACL**

## Background / Scenario

Standard access control lists (ACLs) are router configuration scripts that control whether a router permits or denies packets based on the source address. This activity focuses on defining filtering criteria, configuring standard ACLs, applying ACLs to router interfaces, and verifying and testing the ACL implementation. The routers are already configured, including IP addresses and Enhanced Interior Gateway Routing Protocol (EIGRP) routing.

## Part 1: Plan an ACL Implementation

### Step 1: Investigate the current network configuration.

Before applying any ACLs to a network, it is important to confirm that you have full connectivity. Verify that the network has full connectivity by choosing a PC and pinging other devices on the network. You should be able to successfully ping every device.

### Step 2: Evaluate two network policies and plan ACL implementations.

a. The following network policies are implemented on **R2**:

- The 192.168.11.0/24 network is not allowed access to the **WebServer** on the 192.168.20.0/24 network.
- All other access is permitted.

To restrict access from the 192.168.11.0/24 network to the **WebServer** at 192.168.20.254 without interfering with other traffic, an ACL must be created on **R2**. The access list must be placed on the outbound interface to the **WebServer**. A second rule must be created on **R2** to permit all other traffic.

- b. The following network policies are implemented on **R3**:
- The 192.168.10.0/24 network is not allowed to communicate to the 192.168.30.0/24 network.
  - All other access is permitted.

To restrict access from the 192.168.10.0/24 network to the 192.168.30.0/24 network without interfering with other traffic, an access list will need to be created on **R3**. The ACL must be placed on the outbound interface to **PC3**. A second rule must be created on **R3** to permit all other traffic.

## Part 2: Configure, Apply, and Verify a Standard ACL

### Step 1: Configure and apply a numbered standard ACL on R2.

- a. Create an ACL using the number 1 on **R2** with a statement that denies access to the 192.168.20.0/24 network from the 192.168.11.0/24 network.

```
R2(config)# access-list 1 deny 192.168.11.0 0.0.0.255
```

- b. By default, an access list denies all traffic that does not match a rule. To permit all other traffic, configure the following statement:

```
R2(config)# access-list 1 permit any
```

- c. For the ACL to actually filter traffic, it must be applied to some router operation. Apply the ACL by placing it for outbound traffic on the Gigabit Ethernet 0/0 interface.

```
R2(config)# interface GigabitEthernet0/0
R2(config-if)# ip access-group 1 out
```

### Step 2: Configure and apply a numbered standard ACL on R3.

- a. Create an ACL using the number 1 on **R3** with a statement that denies access to the 192.168.30.0/24 network from the **PC1** (192.168.10.0/24) network.

```
R3(config)# access-list 1 deny 192.168.10.0 0.0.0.255
```

- b. By default, an ACL denies all traffic that does not match a rule. To permit all other traffic, create a second rule for ACL 1.

```
R3(config)# access-list 1 permit any
```

- c. Apply the ACL by placing it for outbound traffic on the Gigabit Ethernet 0/0 interface.

```
R3(config)# interface GigabitEthernet0/0
R3(config-if)# ip access-group 1 out
```

### Step 3: Verify ACL configuration and functionality.

- a. On **R2** and **R3**, enter the **show access-list** command to verify the ACL configurations. Enter the **show run** or **show ip interface gigabitethernet 0/0** command to verify the ACL placements.
- b. With the two ACLs in place, network traffic is restricted according to the policies detailed in Part 1. Use the following tests to verify the ACL implementations:
- A ping from 192.168.10.10 to 192.168.11.10 succeeds.
  - A ping from 192.168.10.10 to 192.168.20.254 succeeds.
  - A ping from 192.168.11.10 to 192.168.20.254 fails.

## Packet Tracer - Configuring Standard ACLs

---

- A ping from 192.168.10.10 to 192.168.30.10 fails.
- A ping from 192.168.11.10 to 192.168.30.10 succeeds.
- A ping from 192.168.30.10 to 192.168.20.254 succeeds.